

REV.	DESCRIPTION	DATE
A	FIRST ISSUE	20220415

NOTES:
 1.MATERIAL: COPPER ALLOY, NICKEL PLATED,THICKNESS 0.25mm
 2.PACKAGING: TRAY PACKAGING
 3.TEMPERATURE RANGE:
 OPERATING : -40°C TO +85°C
 NON OPERATING : -55°C TO +105°C

TITLE					
SFP- 1X2 CAGE					
PART NO.					
GENERAL TOLERANCE					
DRAW	Aaron	DATE	2022-4-15	.X±0.20	.X±1°
CHECK	Aaron	DATE	2022-4-15	.XX±0.15	.XX±5°
APPROVE	Victor	DATE	2022-4-15	.XXX±0.10	

Coorle Technology



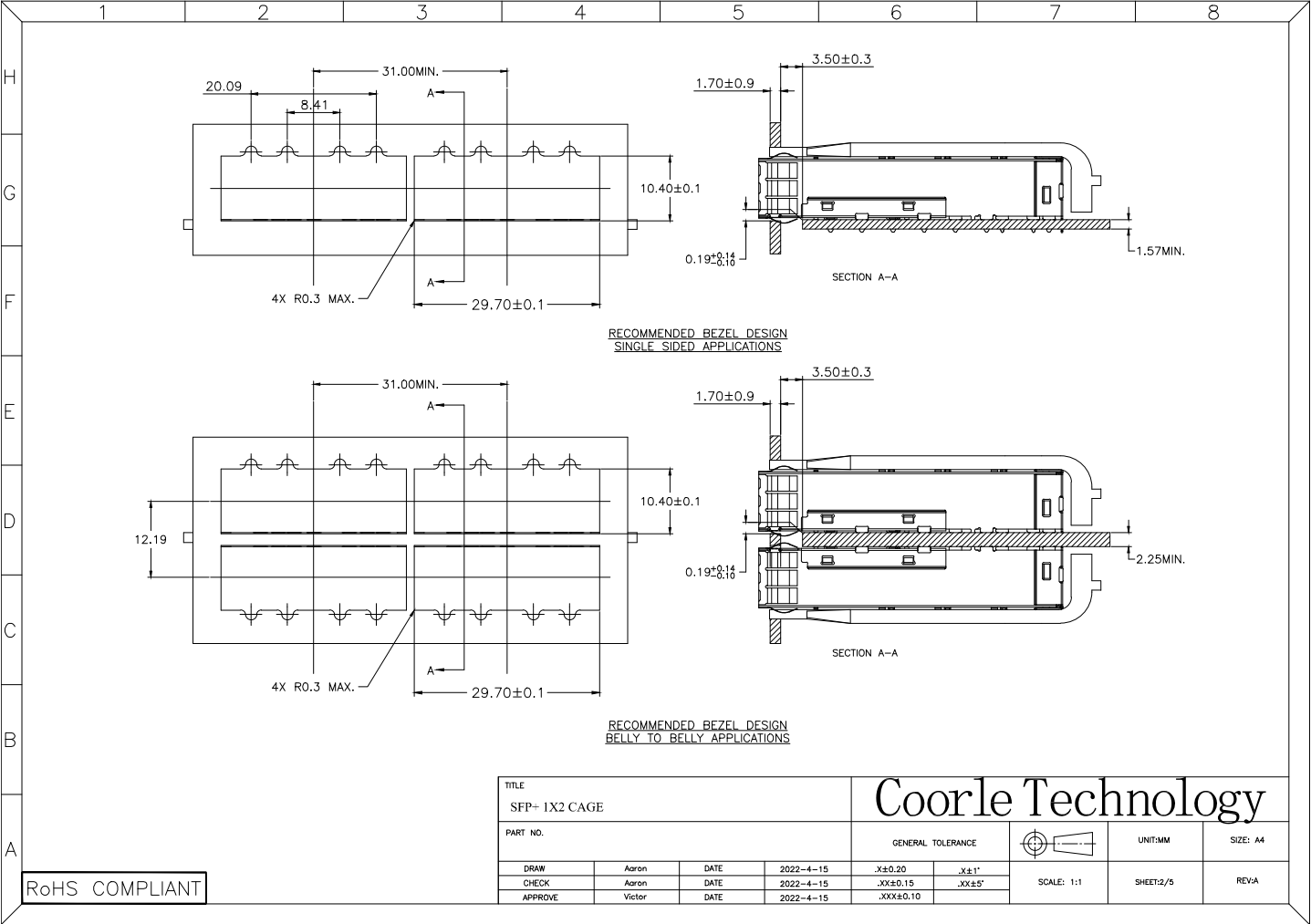
UNIT:MM SIZE: A4

SCALE: 1:1

SHEET:1/5

REV:A

RoHS COMPLIANT

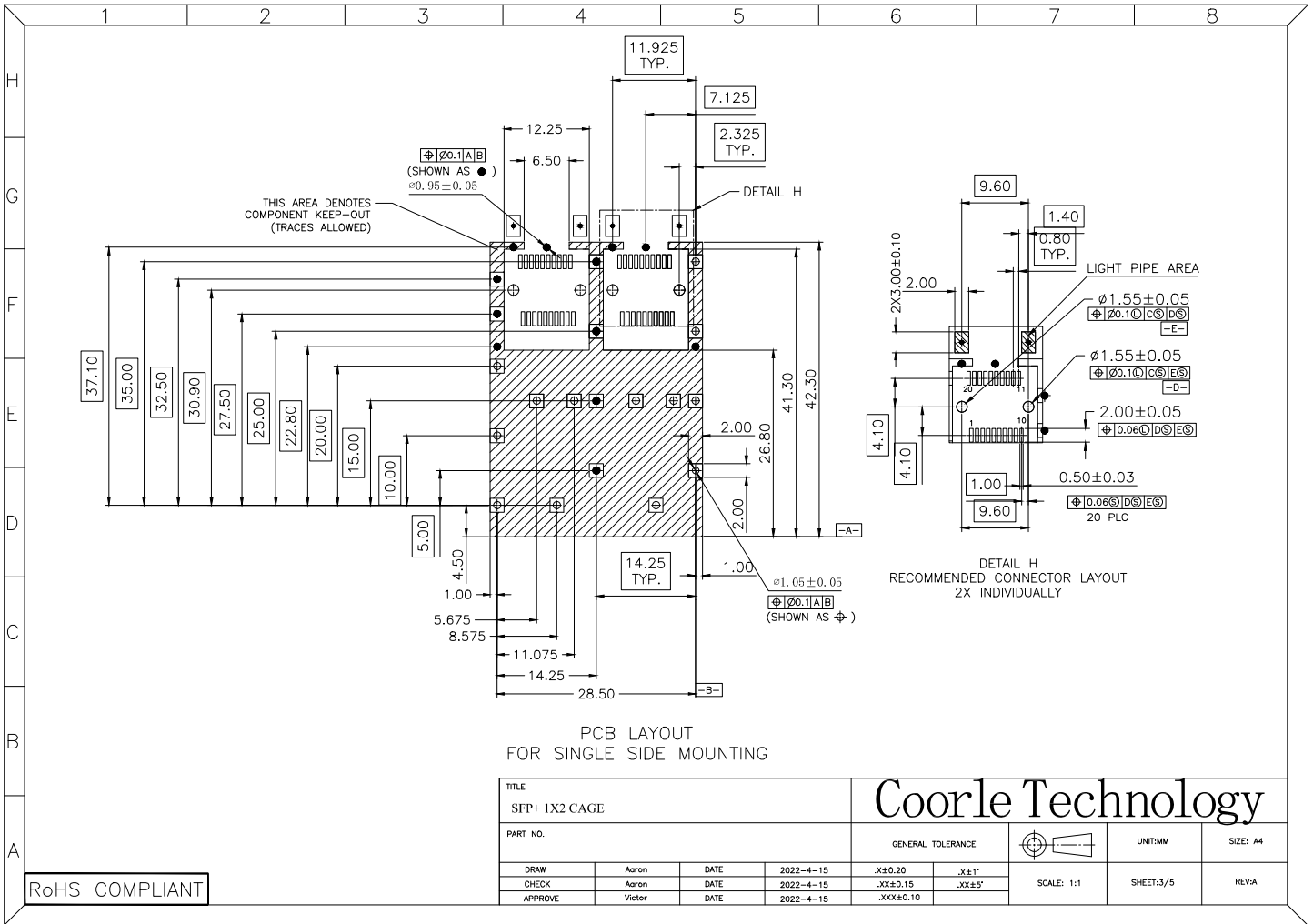


RECOMMENDED BEZEL DESIGN
SINGLE SIDED APPLICATIONS

RECOMMENDED BEZEL DESIGN
BELLY TO BELLY APPLICATIONS

TITLE					Coorle Technology				
SFP- 1X2 CAGE									
PART NO.					GENERAL TOLERANCE			UNIT:MM	SIZE: A4
DRAW	Aaron	DATE	2022-4-15	.X±0.20	.X±1'	SCALE: 1:1		SHEET:2/5	REV:A
CHECK	Aaron	DATE	2022-4-15	.XX±0.15	.XX±5'				
APPROVE	Victor	DATE	2022-4-15	.XXX±0.10					

RoHS COMPLIANT

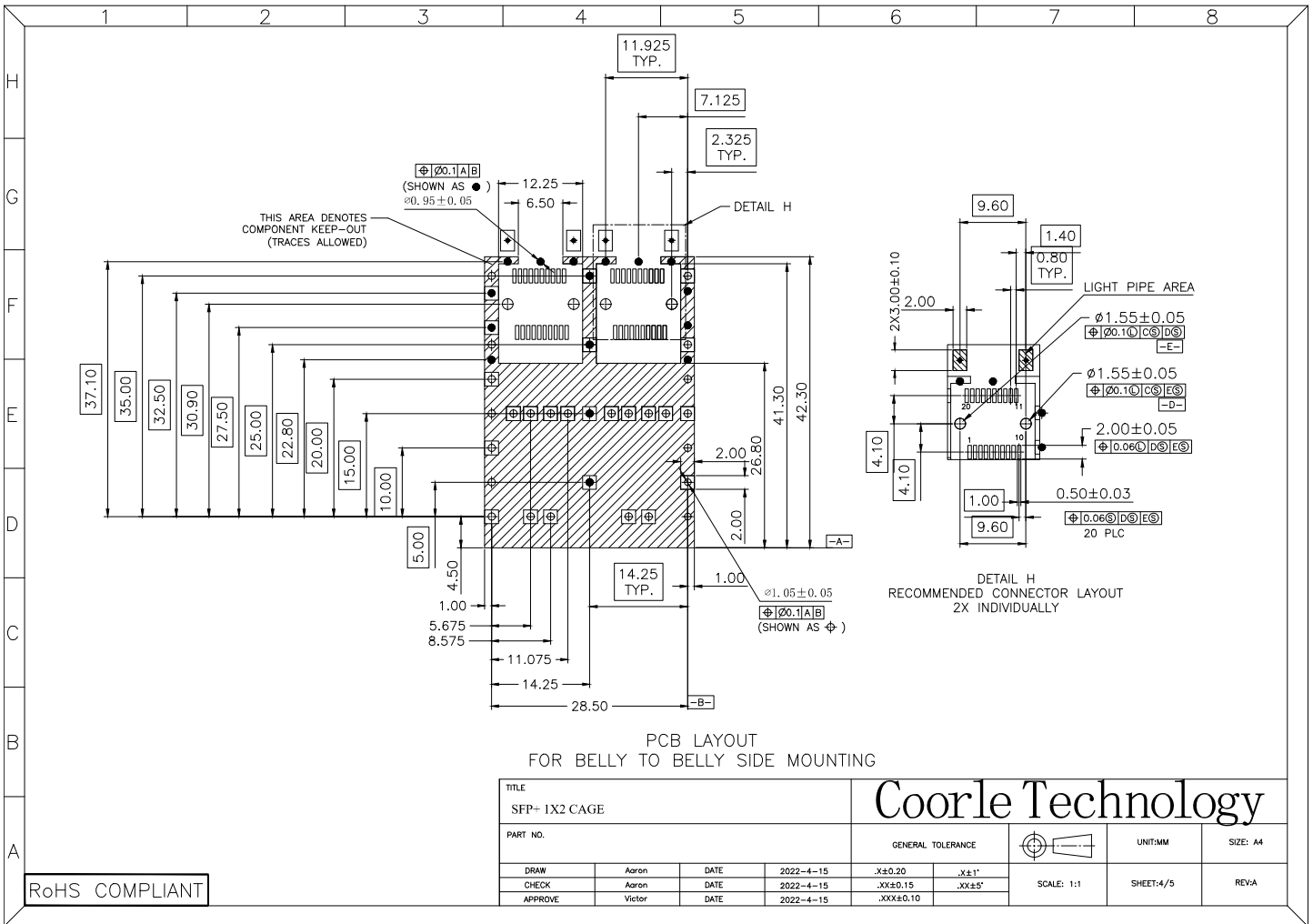


TITLE					
SFP- 1X2 CAGE					
PART NO.					
DRAW		Aaron	DATE	2022-4-15	.X±0.20
CHECK		Aaron	DATE	2022-4-15	.XX±0.15
APPROVE		Victor	DATE	2022-4-15	.XXX±0.10

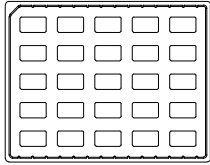
Coorle Technology

GENERAL TOLERANCE			UNIT/MM	SIZE: A4
			SCALE: 1:1	SHEET:3/5

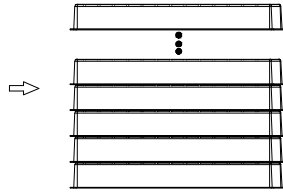
RoHS COMPLIANT



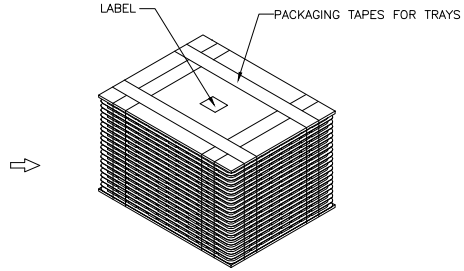
PACKAGE INFORMATION AND LABEL



1. PRODUCTS IN TRAYS

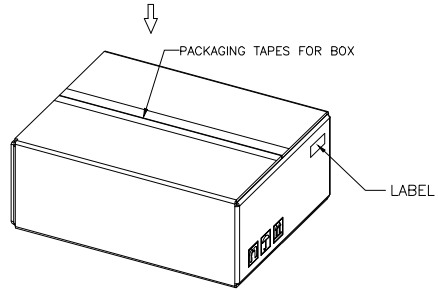


2. 10 TRAYS OVERLAY



3. LABEL & PACKAGING TAPES FOR TRAYS:

PACKAGING LISTS	
ITEM	Q'TY
PRODUCT	168 PCS
TRAY	6 PCS
BOX(L340*W265*H200MM)	1 PCS
LABLE	2 PCS
PACKAGING TAPES	8 M (ABOUT)



4. LABEL & PACKAGING TAPES FOR BOX

TITLE SFP- 1X2 CAGE				Coorle Technology			UNIT:MM		SIZE: A4
PART NO.							GENERAL TOLERANCE		SCALE: 1:1
DRAW	Aaron	DATE	2022-4-15	.X±0.20	.X±1'				
CHECK	Aaron	DATE	2022-4-15	.XX±0.15	.XX±5'				
APPROVE	Victor	DATE	2022-4-15	.XXX±0.10					

RoHS COMPLIANT